

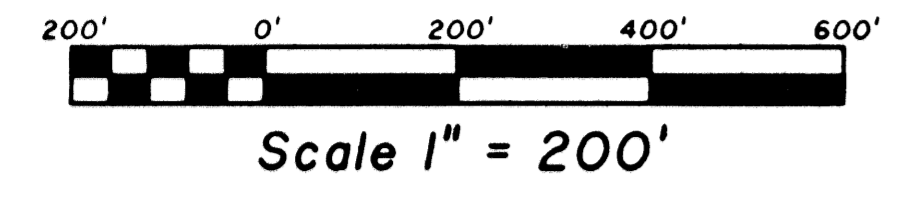
PALM BEACH DOWNS REPLAT ONE

BEING A REPLAT OF PALM BEACH DOWNS, AS SAME IS RECORDED IN PLAT BOOK 62, PAGES 193-200 IN THE PUBLIC RECORDS OF PALM BEACH COUNTY, FLORIDA; LYING IN SECTION 13, TOWNSHIP 46 SOUTH, RANGE 41 EAST, PALM BEACH COUNTY, FLORIDA.

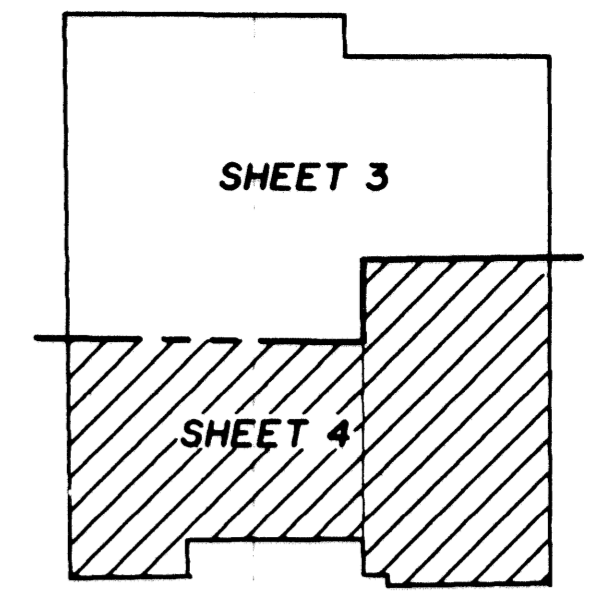
JANUARY 1999
SHEET 4 OF 5

LEGEND

- PERMANENT CONTROL POINT
- PERMANENT REFERENCE MONUMENT
- CONCRETE MONUMENT
- OFFICIAL RECORD BOOK
- PAGE
- PLAT BOOK
- TOWNSHIP
- RANGE
- TYPICAL
- FOUND
- RIGHT OF WAY
- CENTERLINE
- UTILITY EASEMENT
- DRAINAGE EASEMENT
- RADIUS
- ARC LENGTH
- CURVE CENTRAL ANGLE
- POINT OF BEGINNING
- POINT OF COMMENCEMENT
- FOUND PALM BEACH COUNTY DISK IN CONCRETE
- DENOTES SET P.C.P. PSM 5019
- DENOTES SET P.R.M. PSM 5019
- DENOTES P.R.M. FOUND (AS NOTED)



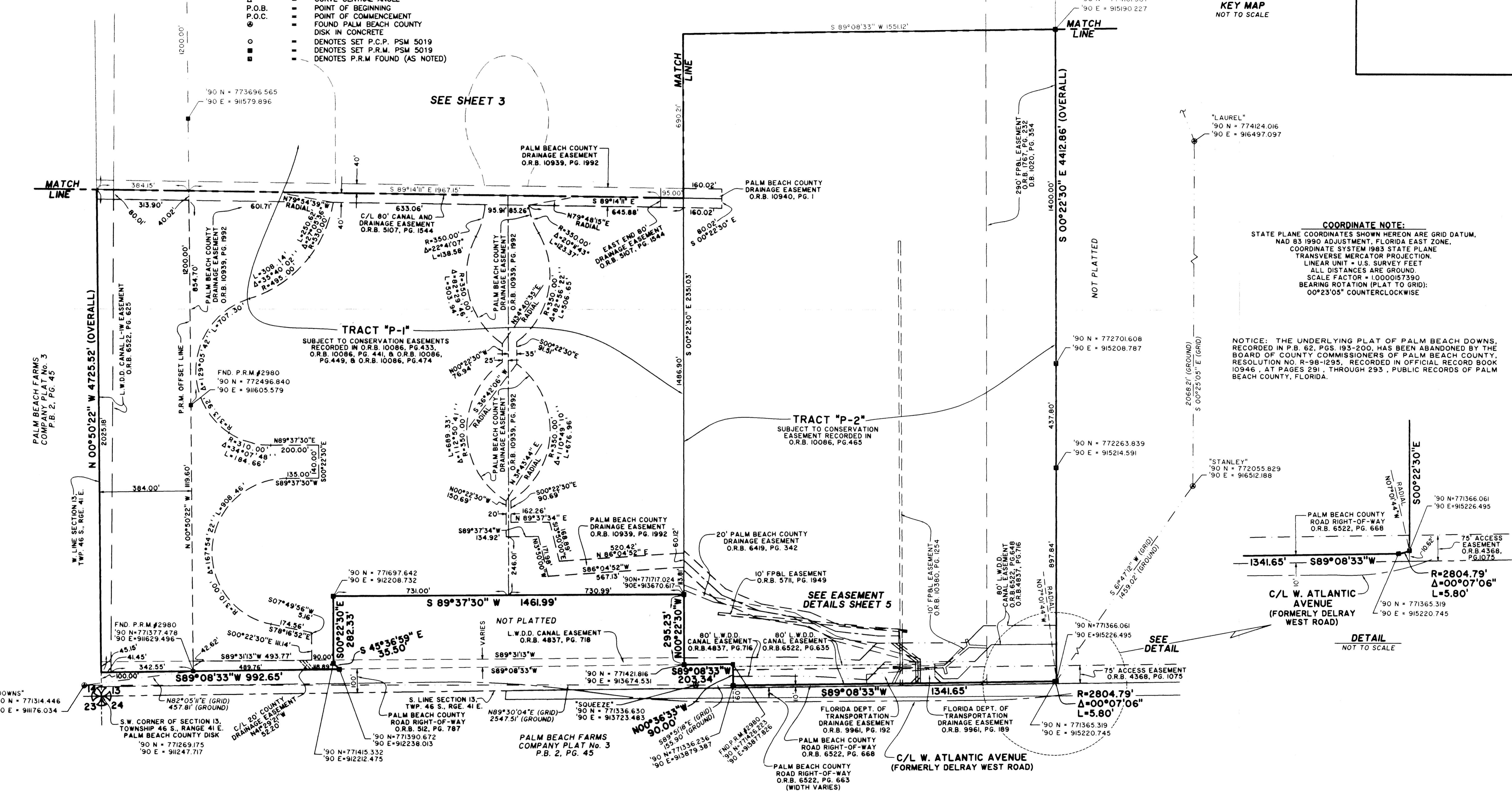
Scale 1" = 200'



KEY MAP NOT TO SCALE

COORDINATE NOTE:
STATE PLANE COORDINATES SHOWN HEREON ARE GRID DATUM, NAD 83 1990 ADJUSTMENT, FLORIDA EAST ZONE, COORDINATE SYSTEM 1983 STATE PLANE TRANSVERSE MERCATOR PROJECTION. LINEAR UNIT = U.S. SURVEY FEET. ALL DISTANCES ARE GROUND. SCALE FACTOR = 1.000057390. BEARING ROTATION (PLAT TO GRID): 00°23'05" COUNTERCLOCKWISE

NOTICE: THE UNDERLYING PLAT OF PALM BEACH DOWNS, RECORDED IN P.B. 62, PGS. 193-200, HAS BEEN ABANDONED BY THE BOARD OF COUNTY COMMISSIONERS OF PALM BEACH COUNTY, RESOLUTION NO. R-98-1295, RECORDED IN OFFICIAL RECORD BOOK 10946, AT PAGES 291, THROUGH 293, PUBLIC RECORDS OF PALM BEACH COUNTY, FLORIDA.



Palm Beach Downs
 Replat 150
 PLAT BOOK 62, PAGES 193-200
 TOWNSHIP 46 S., RANGE 41 E.
 PALM BEACH COUNTY, FLORIDA
 JANUARY 1999
 PUD NAME: Palm Beach Downs

DETAIL NOT TO SCALE

Landmark Surveying & Mapping
 1850 FOREST HILL BOULEVARD LB #4396
 Suite 100 West Palm Beach, Florida
 Phone (561) 433-5405 Fax (561) 439-3882